



10 Whittaker Close, Crewe, CW1 3QY
£220,000

GROUND FLOOR

Lounge 13'3" x 13'1" (4.04m x 4.00m)

High quality wood effect laminate flooring with open aspect leading through to the conservatory

Kitchen/diner 8'0" x 16'0" (2.45m x 4.88m)

Tile flooring with patio doors leading to the rear garden and blind. A range of fitted kitchen units, worktops and integrated kitchen appliances, including oven, hob, hood and dishwasher

Conservatory 9'10" x 9'9" (3.00m x 2.99m)

High quality wood effect laminate flooring with patio doors leading to the rear garden

FIRST FLOOR

Bedroom 13'0" x 10'9" (3.98m x 3.28m)

Carpet flooring with window to the rear elevation, fitted wardrobes and blind

En-suite

High quality vinyl flooring with 2 piece bathroom suite in white, separate showering enclosure and radiator

Bedroom 10'2" x 11'2" (3.12m x 3.41m)

Carpet flooring with window to the side elevation

Bedroom 9'2" x 13'2" (2.81m x 4.03m)

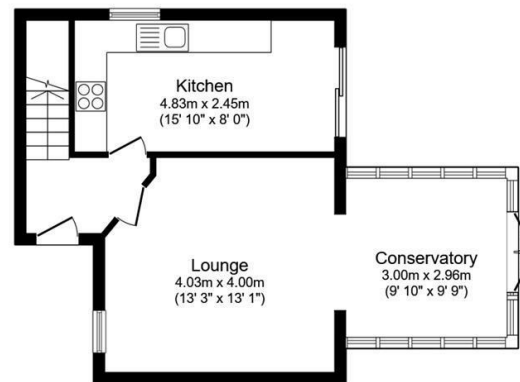
Carpet flooring with window to the side elevation and blind

Bathroom

High quality vinyl flooring with 3 piece bathroom suite in white, partially tiled decor, radiator and blind

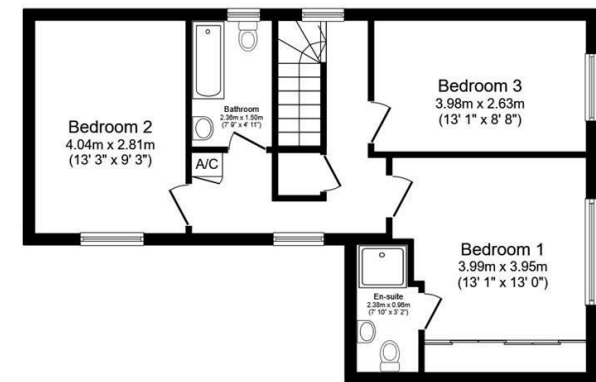
EXTERNAL

Private, well presented rear garden enclosed by panel fencing with laid to lawn and patio area. Parking for 2 vehicles in communal parking area to the rear of the property.



Ground Floor

Floor area 43.2 sq.m. (465 sq.ft.)



First Floor

Floor area 52 sq.m. (559 sq.ft.)

Total floor area: 96.2 sq.m. (1,035 sq.ft.)

This floor plan is for illustrative purposes only. It is not drawn to scale. Any measurements, floor areas (including any total floor area), openings and orientations are approximate. No details are guaranteed, they cannot be relied upon for any purpose and do not form any part of any agreement. No liability is taken for any error, omission or misstatement. A party must rely upon its own inspection(s). Powered by www.Propertybox.io